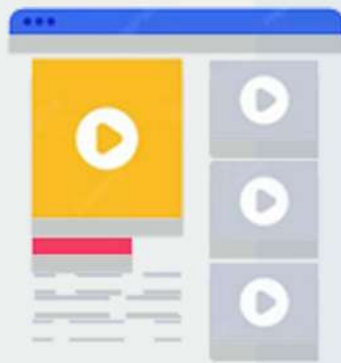


# SCCM-System Center Configuration Manager



## Online Course



**Relevant and Current Content**



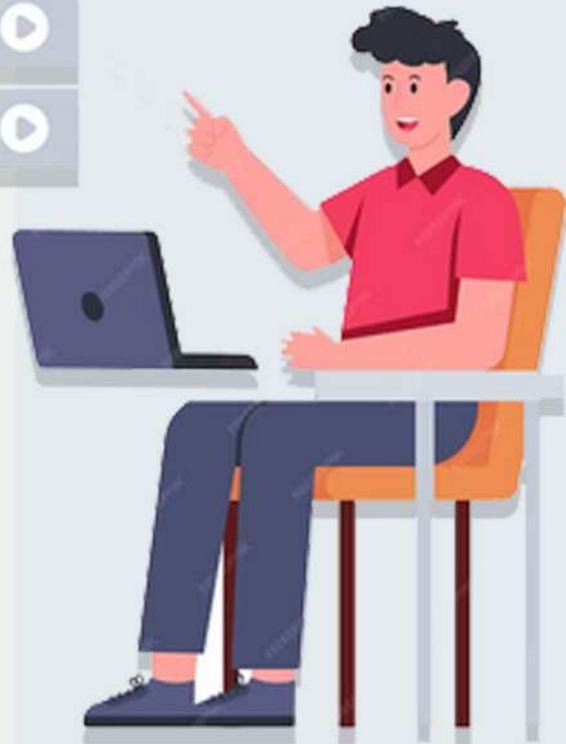
**Career-Focused Outcomes**



**Supportive Learning Community**



**Learn without  
Leaving Home..!!**



**ZETLAN TECHNOLOGIES**

**[www.zetlantech.com](http://www.zetlantech.com)**

## Course Modules



### 1: Introduction to SCCM:

- Overview of SCCM features and capabilities
- Understanding the role of SCCM in IT management

### 2: SCCM Architecture:

- Components and architecture of SCCM
- Understanding primary and secondary sites
- Distribution points and management points

### 3: SCCM Installation and Configuration:

- Installation prerequisites and requirements
- Configuring site settings and boundaries
- Role-based administration and security

### 4: Application Deployment:

- Creating and deploying applications
- Software deployment best practices
- Application deployment monitoring and troubleshooting

### 5: Operating System Deployment (OSD):

- Creating and customizing task sequences
- OSD deployment methods
- Driver management and image customization





## **6: Software Updates Management:**

- Configuring software update points
- Deploying and managing software updates
- Monitoring and troubleshooting update deployments

## **7: Endpoint Protection:**

- Configuring and deploying Endpoint Protection policies
- Monitoring and reporting on endpoint protection status
- Managing antimalware policies and setting

## **8: Inventory and Asset Management:**

- Hardware and software inventory
- Asset intelligence and reporting
- Compliance settings and configuration baselines

## **9: Role-Base Access Control (RBAC):**

- Configuring security roles and permissions
- Role-based administration best practices

## **10: Reporting and Monitoring:**

- SCCM reporting tools and capabilities
- Creating custom reports
- Monitoring and troubleshooting using SCCM console



## **11: SCCM Troubleshooting and Best Practices:**

- Common issues and resolutions
- Best practices for SCCM administration
- Performance tuning and optimization

## **12: Integration with Intune and Co-Management:**

- Overview of Microsoft Intune
- Co-management scenarios and benefits
- Configuring and managing co-management settings

## **13: Upgrading and Migrating SCCM:**

- Planning and performing SCCM upgrades
- Migration strategies and considerations

Zetlan Technologies





**LEARN  
REMOTELY!!**

The efficiency of online learning  
in terms of time management,  
flexibility, and the ability  
to access resources anytime,  
anywhere can be compelling.



**ZETLAN TECHNOLOGIES**  
[www.zetlantech.com](http://www.zetlantech.com)

**For contact: +91 8680961847  
+91 9600579474**

